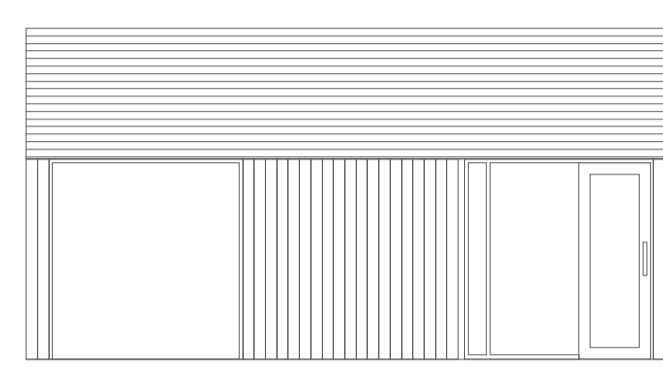
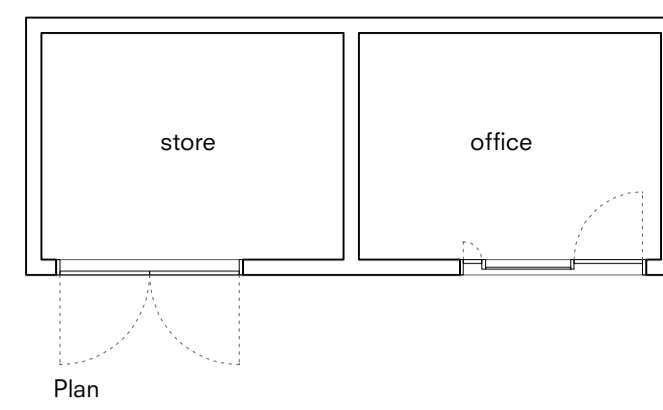
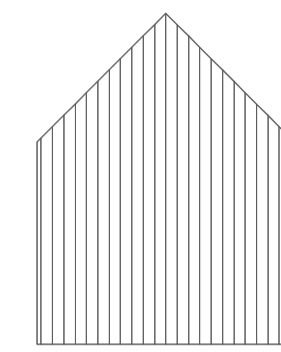


**NEW LANDSCAPE STORE**

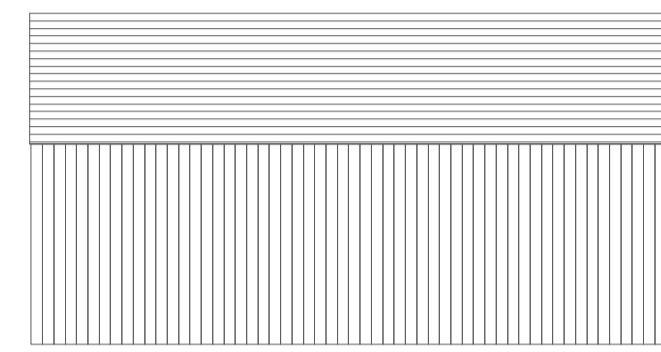
materials:  
 black stained timber boarded walls  
 dark slate roof  
 black stained timber doors  
 stained timber glazed door and window



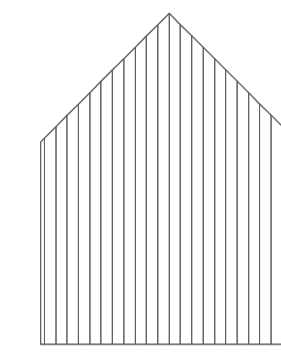
North Elevation



East Elevation



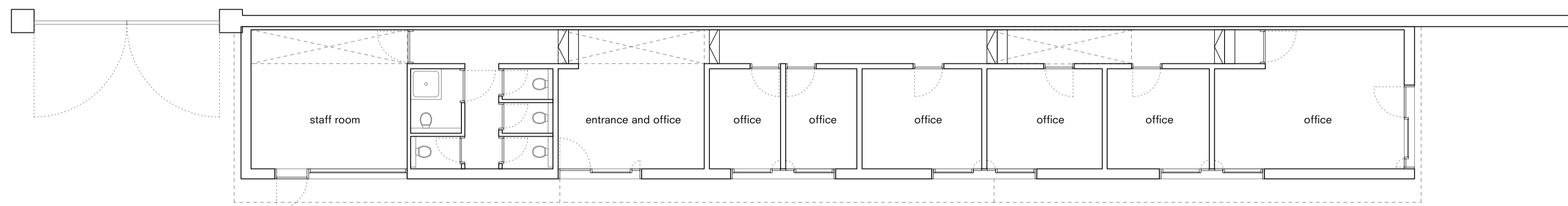
South Elevation



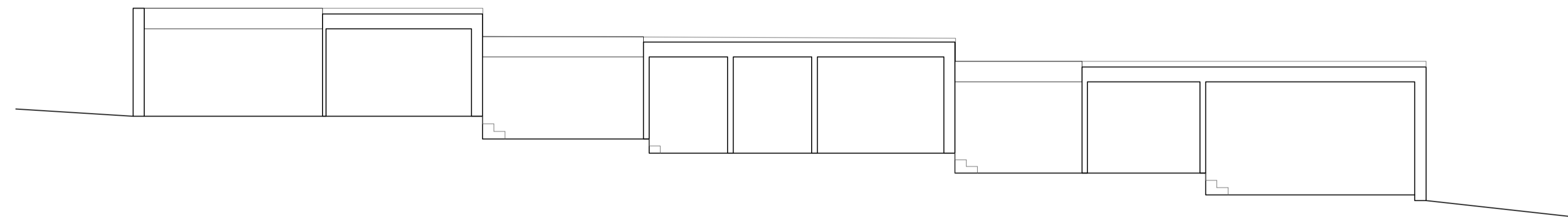
West Elevation

**NEW OFFICE BUILDING**

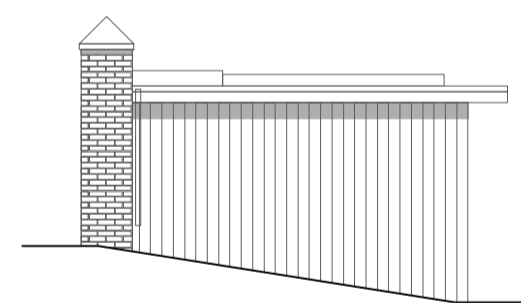
materials:  
 black stained timber boarded walls  
 green roof with overhang and upstand rooflights  
 metal framed windows and doors



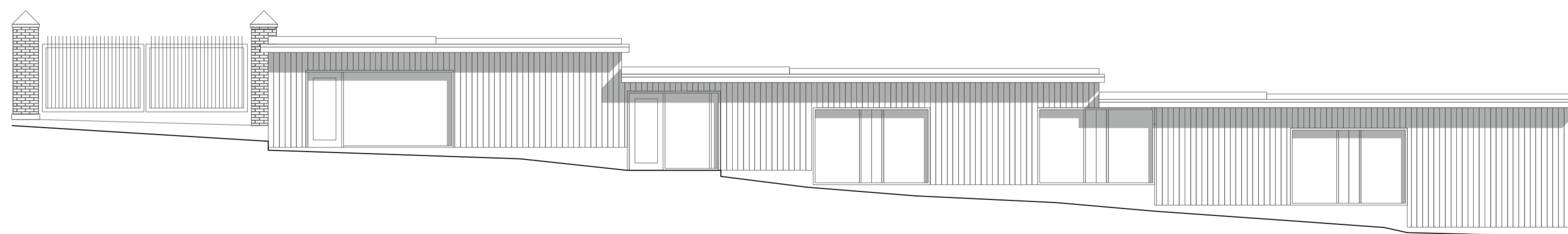
Plan



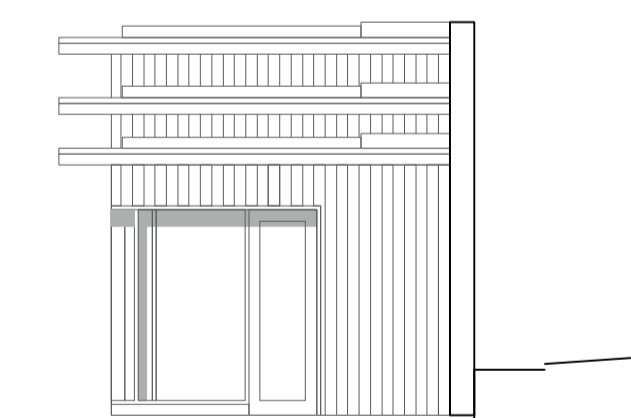
Long Section



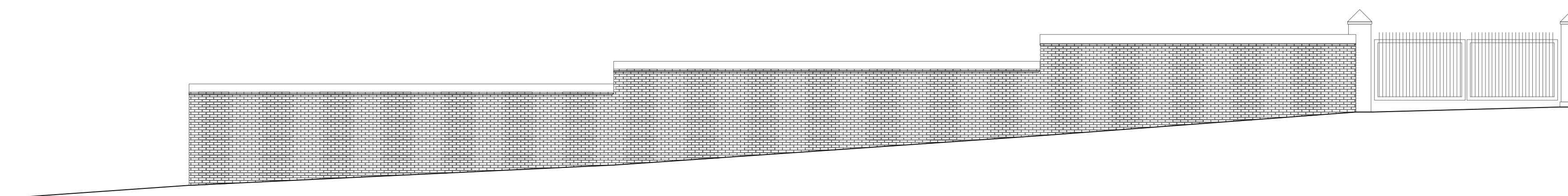
West Elevation



South Elevation



East Elevation



North Elevation

Note:  
 This building was granted planning permission in 2014  
 ref: HGY/2014/0555

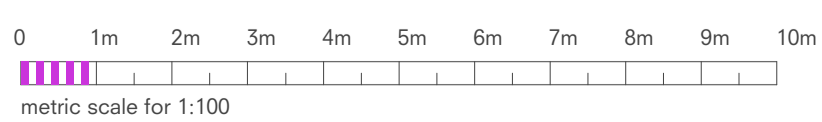
**DOW JONES ARCHITECTS**

10 Station Parade, Balham High Road, London, SW12 9AZ  
 T 020 8675 2544  
 mail@dowjonesarchitects.com  
 www.dowjonesarchitects.com

**Captial Gardens**

Building plans and elevations  
 1:100  
 18.01.02  
 STATUS: Planning

206-P-012



metric scale for 1:100